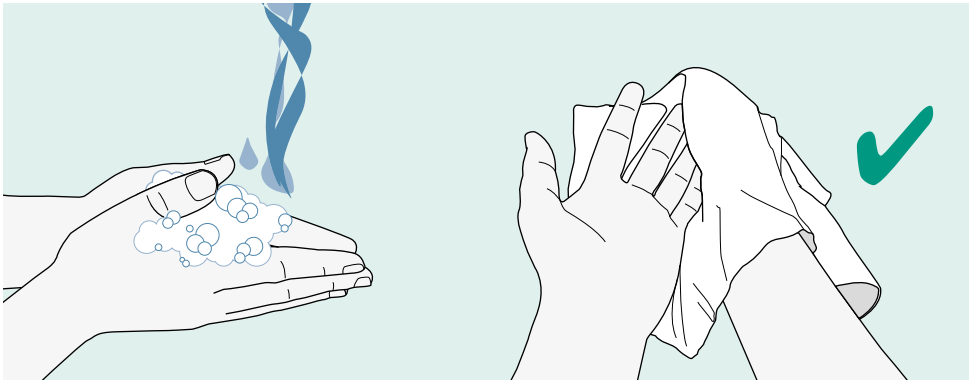


# Omnitest<sup>®</sup> 3

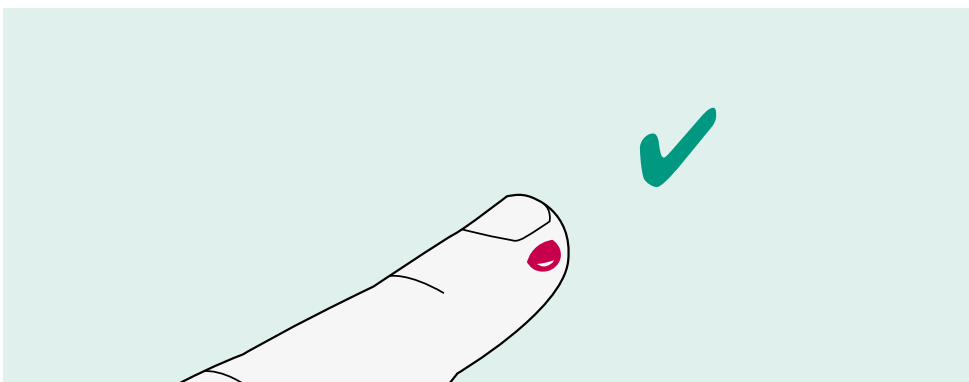
## Instructions for a correct measurement result

### DO

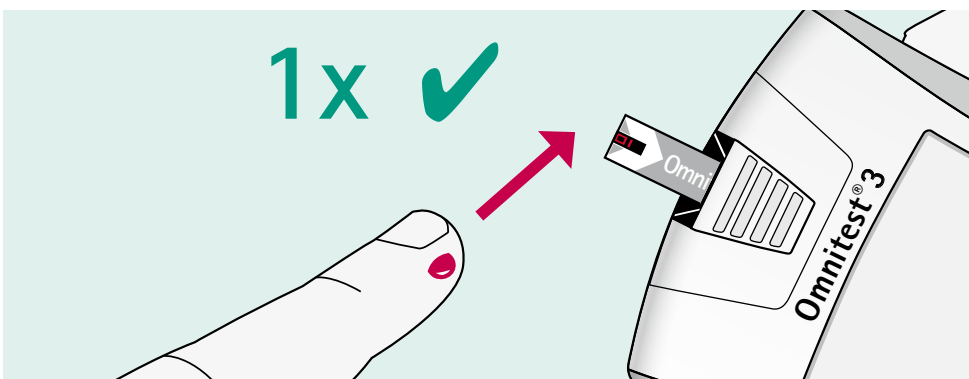


Wash your hands with warm soapy water.

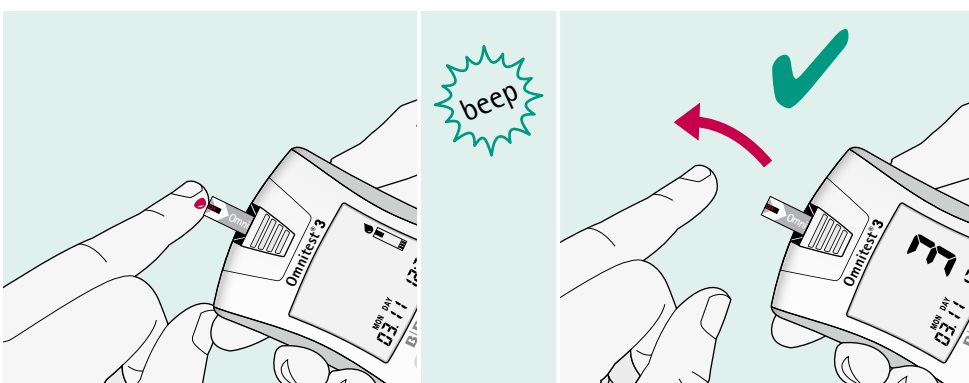
Rinse and dry your hands thoroughly.



Please ensure that you always use a fresh, round drop of blood.



Always apply your blood sample in one step at the end of the test strip.



Remove your finger as soon as you hear the beep sound as a signal for the start of the measurement.

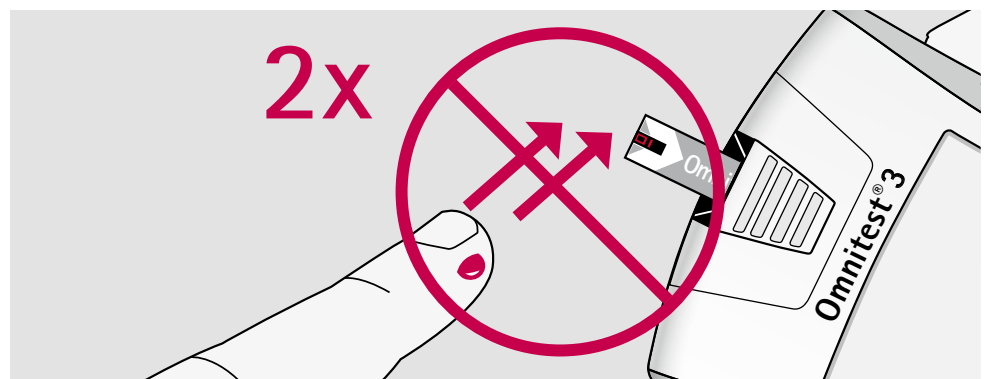
### DON'T



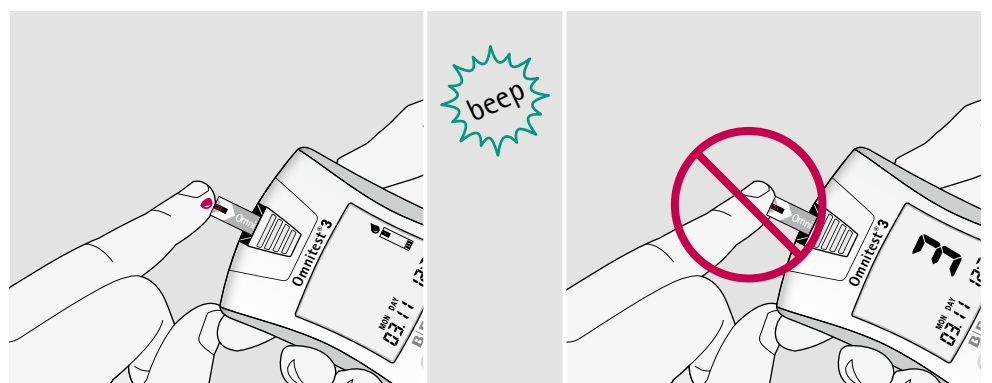
Also residues from food that is not visible can affect the measurement result.



Do not try to apply a smeared blood sample on the test strip.



Do not add blood to the test strip sequentially.



Do not force your finger against the test strip after the start of the measurement.



If you do not take into account these guidelines, you risk wrong measurement results. Please bear in mind that only correct measurement results allow a successful diabetes therapy!