

Omnican[®] fine

HOW TO USE



Remove peel paper.



Place needle onto injection device.
Keep straight.



Screw needle onto injection device.
Ensure a tight fit.



Remove needle container and set aside
for removing pen needle from pen later.



Pull needle shield off without tilting it.



Check functionality according to
instructions for use of injection device.



Dial and inject according to instructions
for use of injection device. After the
injection, leave the needle in the fatty
tissue for about 10 seconds. This prevents
leakage.



Carefully put needle container back on
needle. Unscrew it with container from
pen and discard.



Recommended method of disposal:
Use of medical sharps collector such as
the Omnican[®] box or Medibox[®].

4 mm
32G

6 mm
32G

Ultra-thin-wall technology

4 mm
31G

6 mm
31G

8 mm
31G

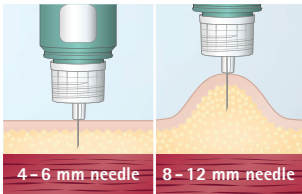
Extra-thin-wall technology



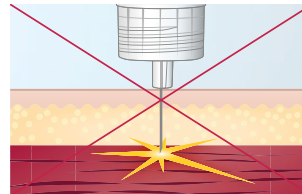
DO



DON'T



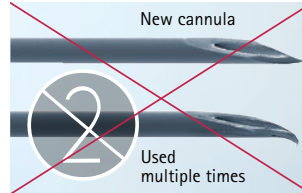
Choose a needle length and a suitable injection technique. Pinch up for needles longer than 6 millimeter.



Avoid intramuscular injection. It is not only painful, but the insulin will be absorbed irregularly.



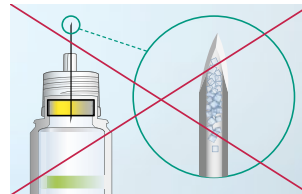
Use a new pen needle for every injection.



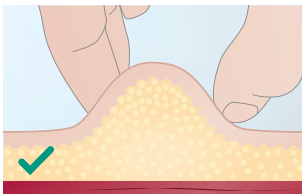
Don't use a needle more than once, because it is no longer sterile, the tip gets damaged – injecting hurts more and may cause lipos. Residues may block the needle.



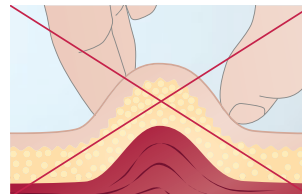
Perform an air shot before every injection to ensure that the insulin flow is steady.



Never inject insulin without having checked that the needle is blockage free.



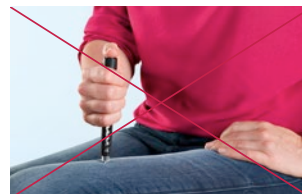
If you pinch up, use your thumb, index and possibly your middle finger. Gently pinch the fatty tissue underneath the skin away from the muscle and create a skin fold.



Don't squeeze too hard, since you will pinch up the muscle as well. This will increase the risk of intramuscular injections.



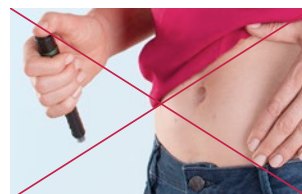
Always inject directly into the skin. And remember to always inject into healthy fatty tissue.



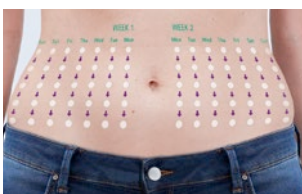
Never inject through your clothes. The silicone finish rubs off, the delicate tip gets bent, and shreds of fabric might block the needle or even enter your skin.



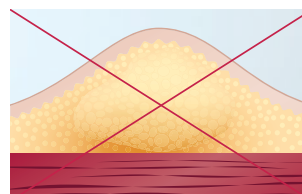
After the injection, leave the needle in the fatty tissue for at least 10 seconds. This prevents leakage.



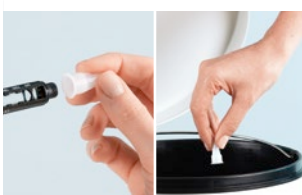
Don't pull the needle out directly after injection.



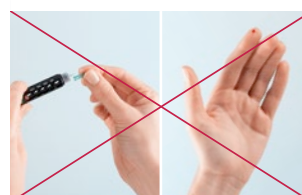
Change injection spots to prevent lipohypertrophies (short: lipos).



Never inject into the same spot more than once in a row; the risk of lipos forming is too high.



After injection, dispose of the needle straight away according to local regulations. Use the outer needle container to do so.



Don't recap the needle to reuse it. This is no protection and it is no longer sterile. And you might hurt yourself, since the needle shield is small.